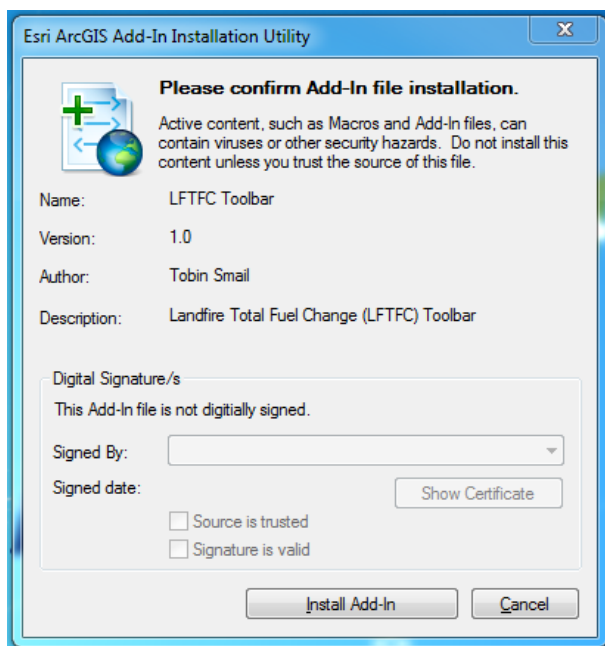


# Install/Uninstall instructions for ArcGIS Toolbar LFTFC 0.153

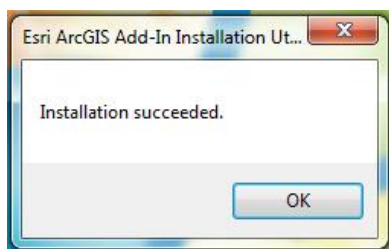
This has been tested with 10.1, 10.2, and presumably more recent versions

## Installing

1. Uninstall any previously installed LFTFC toolbars
  - a. All LFTFC toolbars prior to version 0.153 must be uninstalled through the “Control panel”, “Programs”, “Uninstall a program”
  - b. All other versions scroll down to “Uninstalling” heading.
2. Installing - Run Setup\_LFTFC\_0153.bat
  - a. Double left click to run “Setup\_LFTFC\_0153.bat”
  - b. This copies required files to "C:\Landfire\LFTFC"
  - c. Once the black command window closes automatically (2 minutes...ish), then the ArcGIS Add-in window opens.
3. ArcGIS Add-in window opens



Click “Install Add-In”



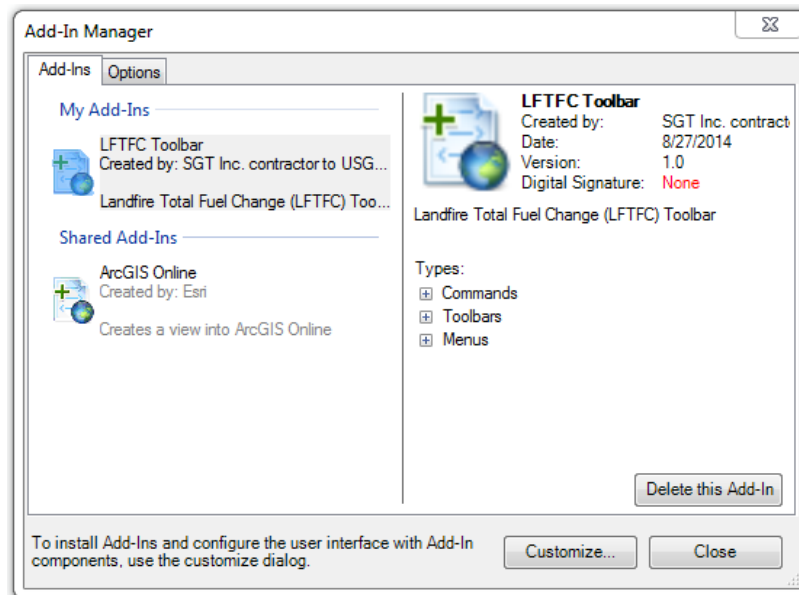
Click “OK”



- a. Start ArcMap and LFTFC should be visible
- b. If LFTFC is not visible, right click in the toolbars and select “LFTFC”

# Uninstalling

1. Start ArcMap
  - a. Select “Customize” at the top of the screen in the menu bar.
  - b. In the “Customize” menu bar select “Add-in Manager”



- c. Select “LFTFC Toolbar” located under “My Add-Ins”
    - d. Click “Delete this Add-In”
2. Open “Windows Explorer”
  - a. Navigate to the “(C:)” directory
  - b. Delete the folder named “Landfire”
  - c. Close ArcMap. The next time you open ArcMap “LFTFC” toolbar should be gone.