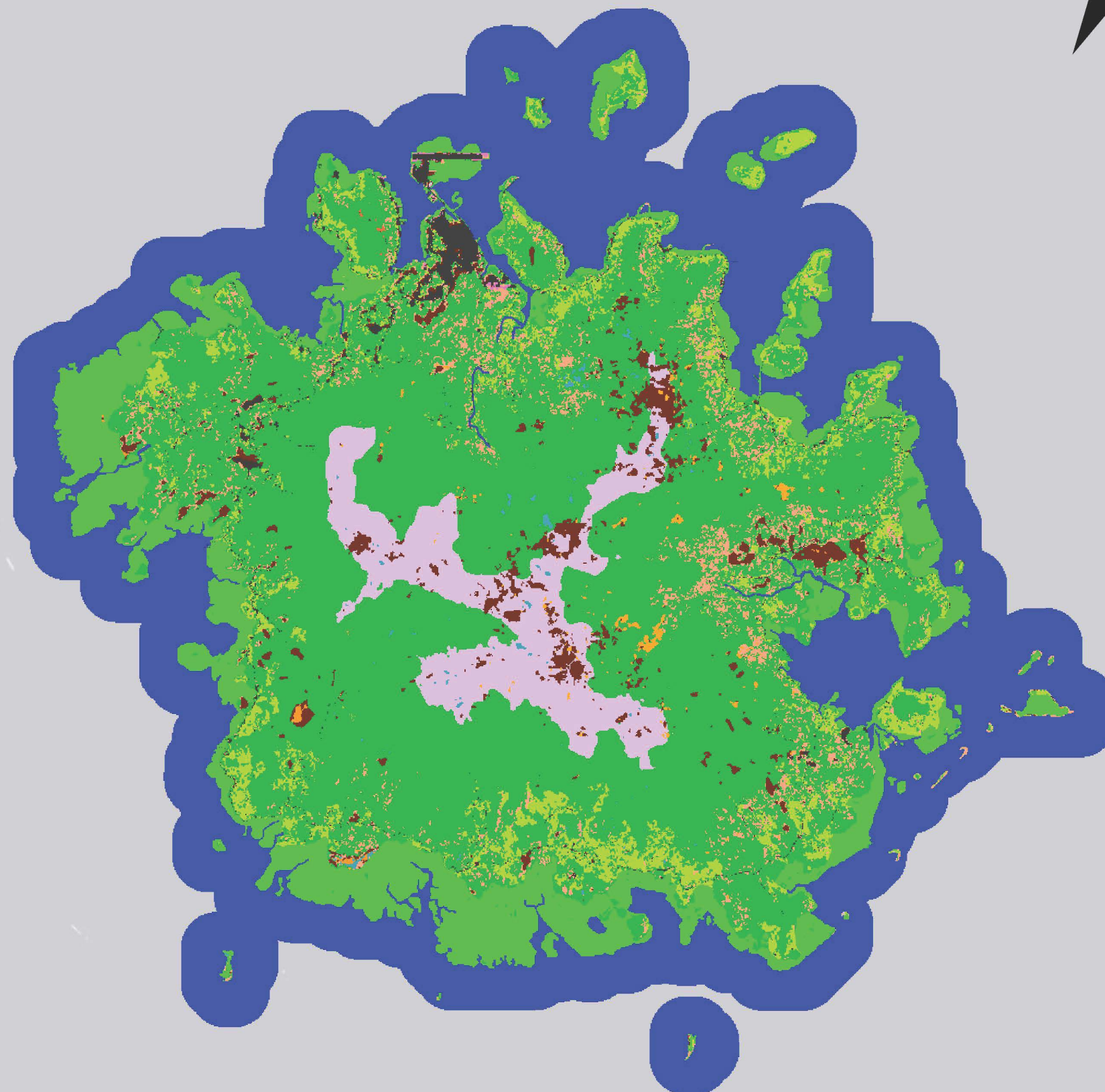




# LF 2016 Remap IA Federated States of Micronesia Pohnpei Existing Vegetation Type



- Micronesian Dry-Site Lava Flow
- Micronesian Dry Coastal Strand
- Micronesian Lowland Rain Forest
- Central and Southern Polynesian Montane Rainforest
- Polynesian Freshwater Marsh
- Micronesian Swamp Forest
- Western Pacific Mangrove
- Micronesian Dry Coastal Strand Shrubland
- Micronesian Dry Coastal Strand Herbaceous
- Open Water
- Developed-Open Space
- Agriculture-Pasture and Hay
- Polynesian Ruderal Lowland Rainforest
- Polynesian Ruderal Lowland Shrubland
- Polynesian Ruderal Scrub Coastal Strand
- Tropical Pacific Forest Plantation
- Polynesian Ruderal Lowland Grassland
- Polynesian Ruderal Herb Coastal Strand

