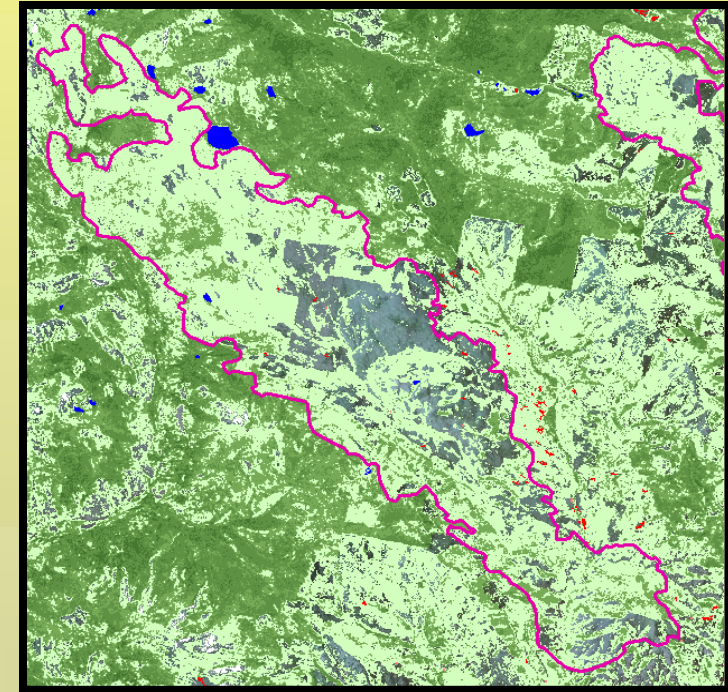
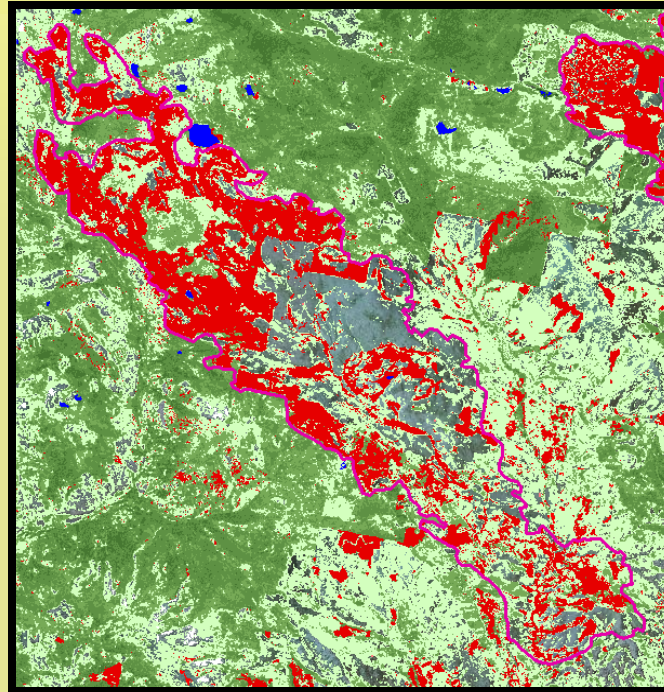
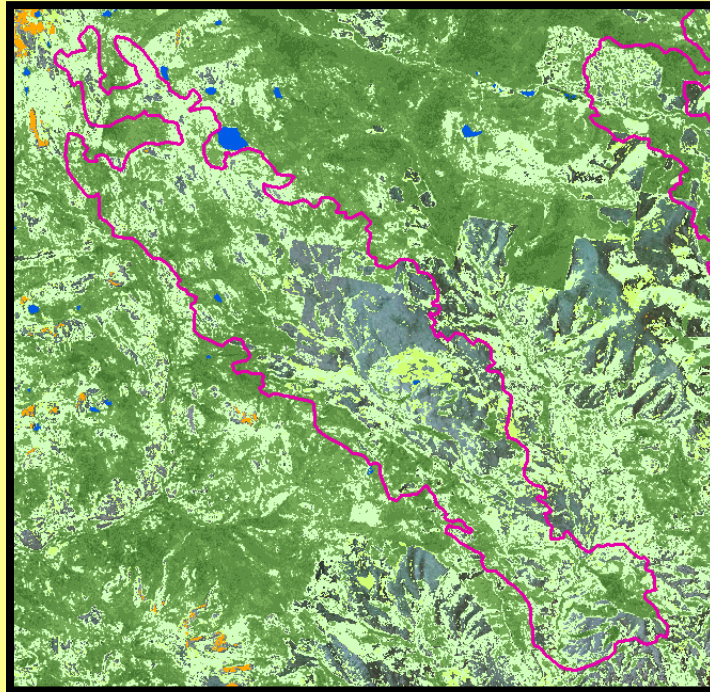


Example of Change in a LANDFIRE Refresh 2008 [1.1.0] Product Reflecting an Incorporated Disturbance



LF 2001 Existing Vegetation Cover + Burn Severity from MTBS = LF 2008 Existing Vegetation Cover

Notes

- *The pink lines near the center of the images show the boundary of the 2003 Mineral-Primm Fire near Missoula, Montana*
- *Darker green tones indicate higher tree cover, lighter green tones indicate lower tree cover—all other tones represent non-forest classes*
- *MTBS = Monitoring Trends in Burn Severity [U.S. Geological Survey and U.S. Forest Service]*