

# LANDFIRE LF Total Fuel Change (LFTFC)

Install/Uninstall instructions for ArcGIS Pro Add-In LFTFC\_Pro

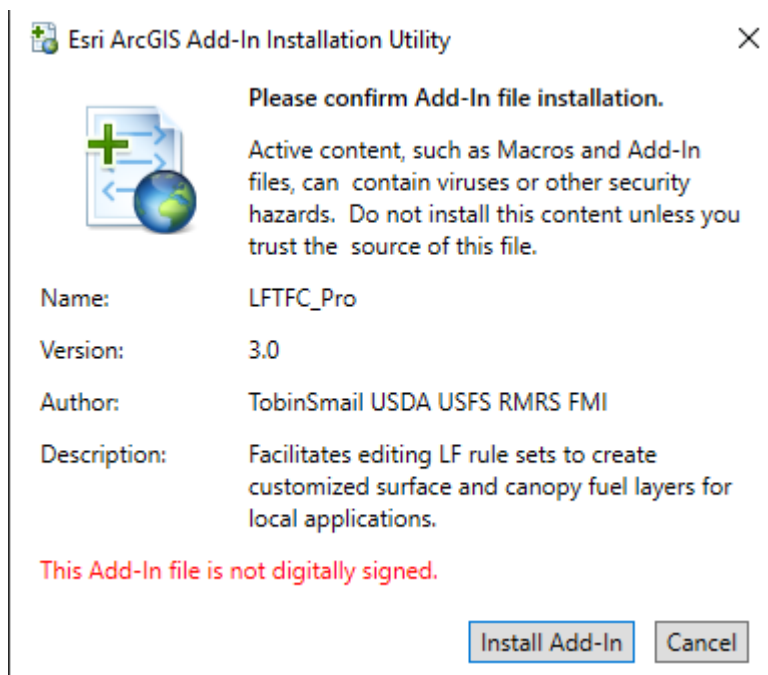
- ii -

Install/Uninstall instructions for ArcGIS Pro Add-In LFTFC\_Pro

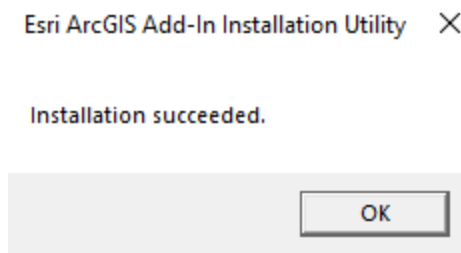
This has been tested with 3.1, and presumably more recent versions.  
**(IMPORTANT! Microsoft Office Access must be 64bit version)**

## Installing

1. Uninstall any previously installed LFTFC\_Pro Add-Ins
  - a. Scroll down to “Uninstalling” heading.
2. Installing - Run Setup\_LFTFC\_Pro\_####.bat
  - a. Make sure ArcGIS Pro is closed
  - b. Double left click to run “Setup\_LFTFC\_Pro\_####.bat”
  - c. This copies required files to "C:\Landfire\LFTFC\_Pro"
  - d. Once the black command window closes automatically (2 minutes...ish), then the ArcGIS\_Pro Add-in window opens.
3. ArcGIS Pro Add-in window opens

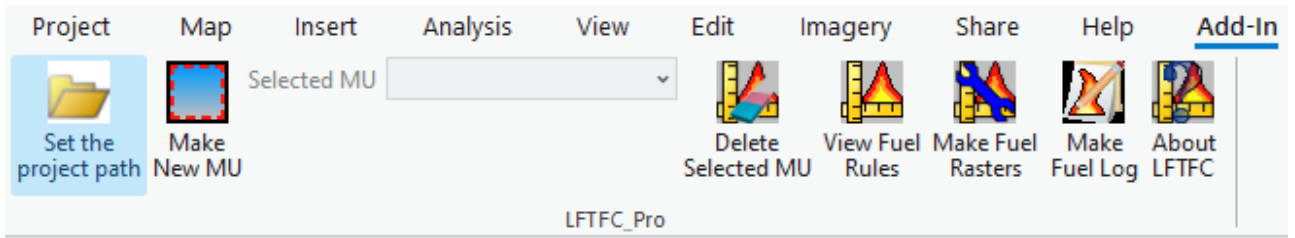


Click “Install Add-In”



Click “OK”

4. Start ArcGIS Pro and LFTFC\_Pro should be visible in the Add-In tab.

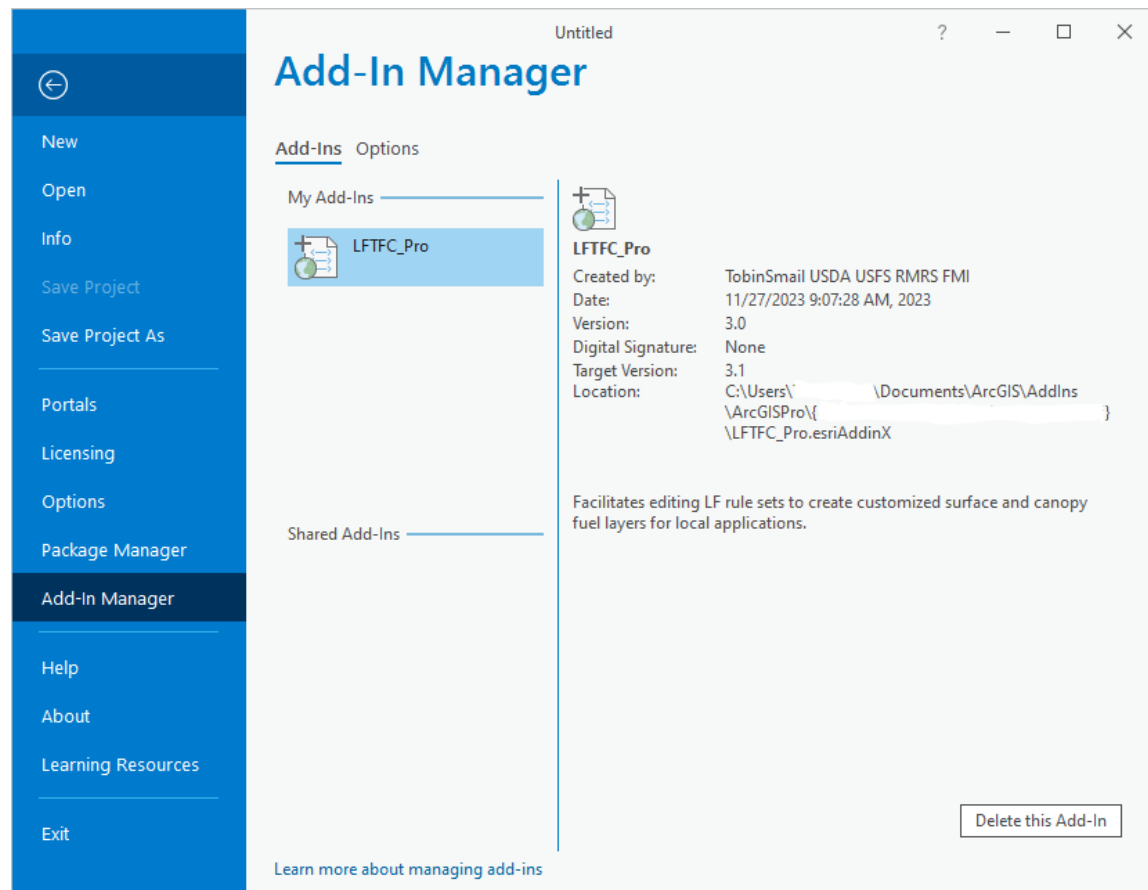


5.

## Uninstalling

1. Start ArcGIS Pro

- a. Select "Project" at the top of the screen in the menu bar.
- b. In the "Project" menu bar select "Add-in Manager"



- c. Select "LFTFC\_Pro Add-In" located under "My Add-Ins"
  - d. Click "Delete this Add-In"
  - e. Click "Close"
  - f. Close ArcGIS Pro
2. Open "Windows Explorer"
- a. Navigate to the "(C:\Landfire)" directory
  - b. Delete the folder named "LFTFC\_Pro"

3. Start ArcGIS Pro (This next part seems unnecessary, but some version of ArcGIS Pro have a problem
  - a. Start ArcGIS Pro
  - b. Confirm "LFTFC\_Pro" Add-In is gone.
  - c. Close ArcGIS Pro