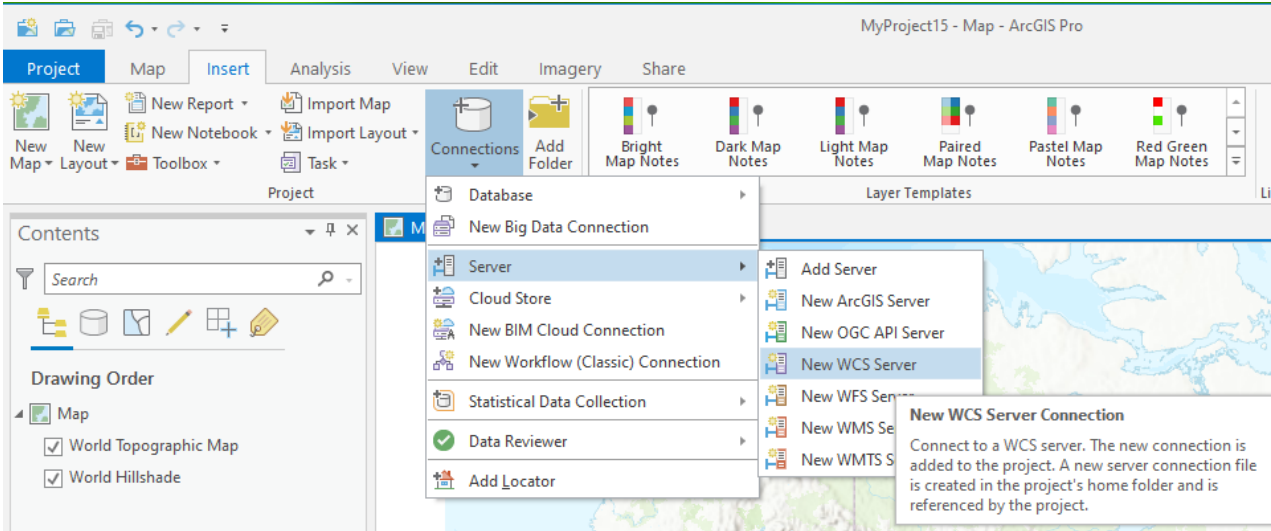
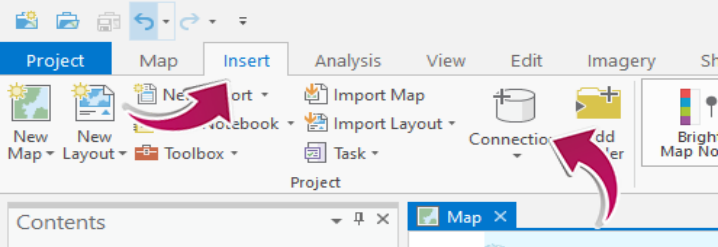


How to Use WCS or WMS calls in ArcGIS Pro:

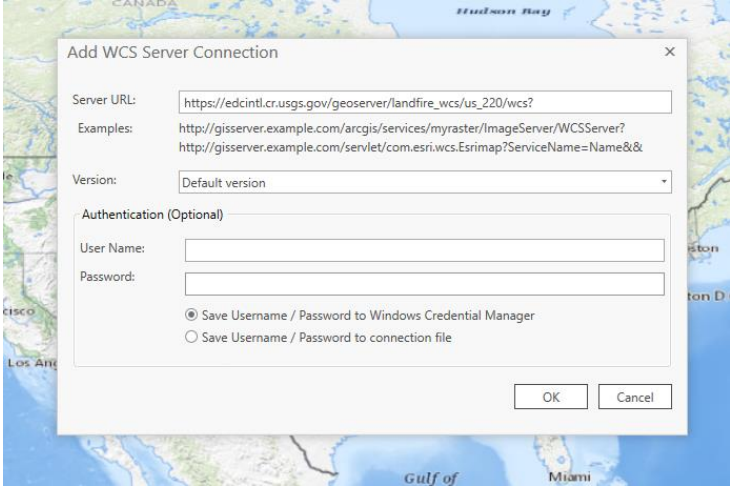
WCS Call:

WCS allows you to access LANDFIRE data layers to use for analysis or modeling without downloading.

- 1) Start ArcGIS Pro
- 2) Start a "Map" template
- 3) Click on the "Insert" tab
- 4) Click on the "Connections" tab
- 5) Select "Server -> New WCS Server"



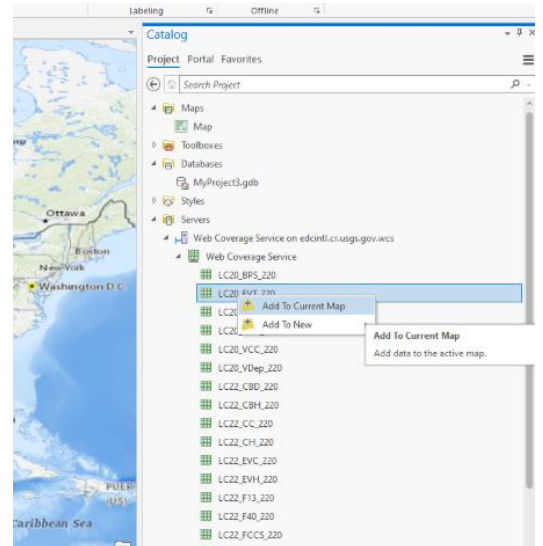
- 6) On "Add WCS Server" window, enter URL:
 - a. https://edcintl.cr.usgs.gov/geoserver/landfire_wcs/us_220/wcs?



- b. Press "OK" at the bottom of the window

- 7) In the Catalog, under Servers, there is the new WCS server addition

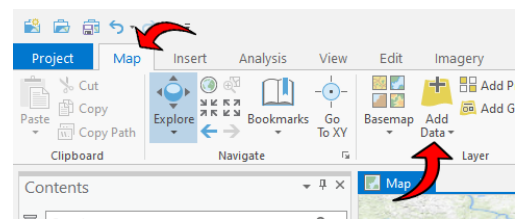
- 8) **Double Click** on the Web Coverage Service for edcintl.cr.usgs.gov.wcs
 - a. **Double click** on the Web Coverage Service
- 9) Select the **“Map”** tab and **right click** on the layer(s) in the Catalog you wish to display from the WCS server listing and select **“Add to Current Map”**.



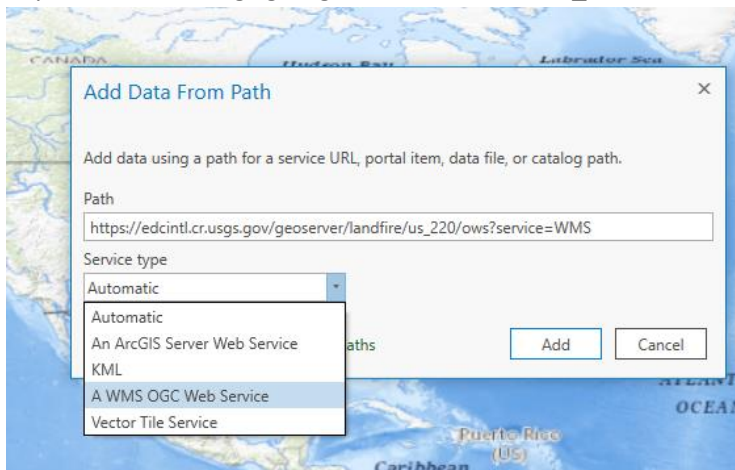
WMS Call:

WMS calls allow you to access LANDFIRE within your desktop mapping session that are formatted as they appear on the map viewer.

- 1) Start ArcGIS Pro
- 2) Click on the **“Map”** tab
 - a. Click on the **“Add Data”** (Plus sign)
 - b. On **“Add Data”** drop-down, select **“Data from Path”**
- 3) Enter the **WMS URL** in the Server URL text box:



https://edcintl.cr.usgs.gov/geoserver/landfire/us_220/ows?service=WMS



- 4) Select **“A WMS OGC Web Service”** from the Service type drop-down
- 5) Click **“Add”**
- 6) In the Table of Contents, click the **toggle for LANDFIRE** to see the full layer list, then select the layer you wish to view

