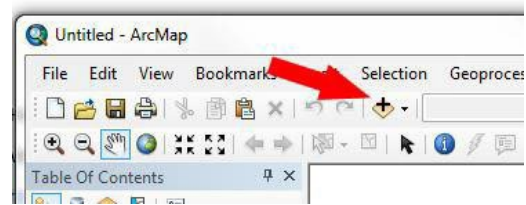


# How to Use WCS or WMS calls in ArcMap:

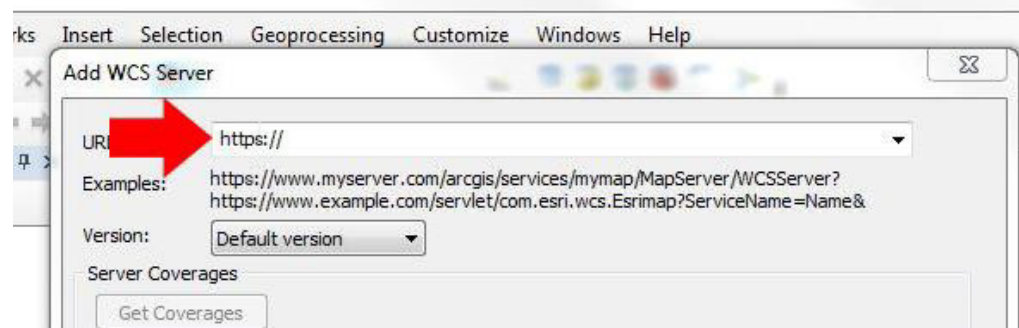
## WCS Call:

WCS allows you to access LANDFIRE data layers to use for analysis or modeling without downloading.

- 1) Start ArcMap
- 2) Click on **Add Data** (Plus sign)
- 3) On "Add Data" window, select **GIS Servers**,  
from the Look in drop down menu
- 4) Double Click "**Add WCS Server**"
- 5) On Add WCS Server window, **enter URL:**



- a. [https://edcintl.cr.usgs.gov/geoserver/landfire\\_wcs/us\\_200/wcs](https://edcintl.cr.usgs.gov/geoserver/landfire_wcs/us_200/wcs)



- b. Press "**OK**" at the bottom of the window
- 6) In the Add Data Window, **double click** on the newly added WCS Service.
- 7) Select the layer(s) you wish to display and then press "**Add**"

# WMS Call:

WMS calls allows you to access LANDFIRE within your desktop mapping session that are formatted as they appear on the DDS.

- 1) Start ArcMap
- 2) Click on the **Add Data** (Plus sign)
- 3) On "Add Data" window, select **WMS Server** from the Look in drop down menu
- 4) **Enter the WMS URL** in the Server URL text box:

[https://edcintl.cr.usgs.gov/geoserver/landfire/us\\_200/ows?service=WMS&request=GetCapabilities](https://edcintl.cr.usgs.gov/geoserver/landfire/us_200/ows?service=WMS&request=GetCapabilities)

Add WMS Server

URL: **http://**

Examples: <http://www.myserver.com/arcgis/services/mymap/MapServer/WMServer?>  
<http://www.example.com/servlet/com.esri.wms.Esrimap?ServiceName=Name&>

Version: Default version

Parameter	Value
-----------	-------

Server Layers

Get Layers

- 5) Click **OK**
- 6) **Double click** the item called "LANDFIRE on edcintl.cr.usgs.gov"
- 7) **Double click** the item called **LANDFIRE WMS Service** and **click Add**
- 8) **Double click** the item called **LANDFIRE WMS Group Layer** and **click Add**
- 9) Select the **Map Service** you wish to view, for example US\_200 and **click Add**
- 10) Click the **plus sign** to see the full layer list, then select the layer you wish to view

Table Of Contents

Layers

- LANDFIRE
  - us\_210
    - LC21\_FVT\_210
    - LC21\_FVH\_210
    - LC21\_FVC\_210
    - LC21\_FDst\_210
    - LC21\_F40\_210
    - LC21\_F13\_210
    - LC21\_CH\_210
    - LC21\_CC\_210
    - LC21\_CBH\_210
    - LC21\_CBD\_210
    - LC19\_EVH\_210
    - LC19\_EVC\_210